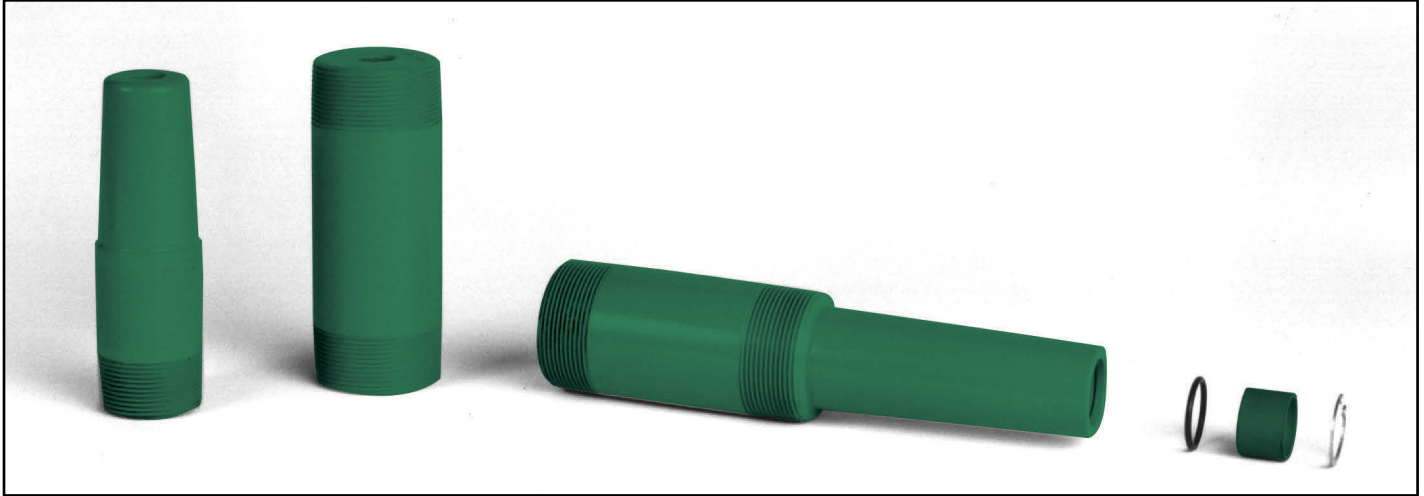


# CHOKE NIPPLES

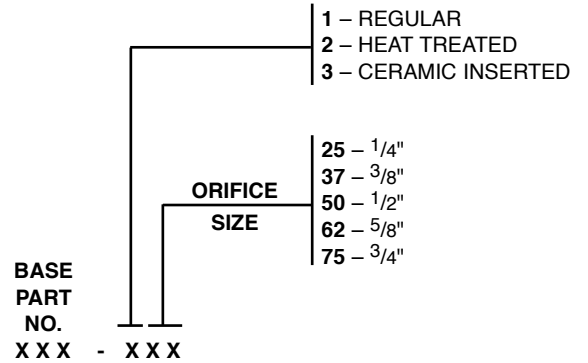


## CHOKE NIPPLES

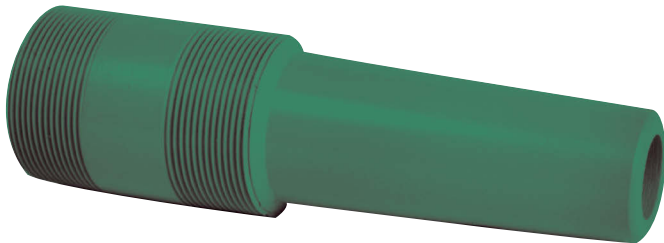
These nipples are recommended for use as positive chokes for mud mixing, jetting, and other applications. Various types are offered, including ceramic inserted, used in highly abrasive service.

CHOKE NIPPLES					
SIZE	WEIGHT LBS.	REGULAR PART NO.	HEAT TREATED PART NO.	CERAMIC INSERTED	
				PART NO.	LESS INSERT PART NO.
1 1/2" x 6"	4	-	1562xx	-	-
2" x 6"	6	2061xx	2062xx	K2063xx	2063
2" x 10"	9	2101xx	2102xx	K2103xx	2103

## HOW TO ORDER



3" Jet Nipple



3" JET NIPPLE		
PART NO.	ORIFICE SIZE	WEIGHT LBS.
312150	1 1/2"	18.5
312200	2"	15



A DIVISION OF BOB HERBERT & ASSOCIATES, INC.  
www.bhde.com