

MANIFOLD FITTINGS

MANIFOLD FITTINGS

HENDERSHOT Standpipe and Manifold high pressure fittings are manufactured and machined from either ASTM-A216 WCB Grade 70-36 or API Type 3 (100-75), both high grade carbon steels, for excellent weld-a-bility, and to withstand the extreme high pressures resulting from modern drilling methods.

HENDERSHOT fittings are furnished in a variety of designs which are readily adaptable to all types of pump manifolds and mud line systems. All fittings are available in welded or threaded connections and are designed and then precision machined for 5,000 PSI working pressure and 10,000 PSI test pressure. The product line also includes 2" through 4" fittings available for 10,000 PSI working pressure. The 5" and 6" fittings are available in 7,500 PSI working pressure.

**HENDERSHOT
TOOL COMPANY**

Distributed by

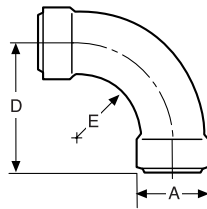


A DIVISION OF BOB HERBERT & ASSOCIATES, INC.
www.bhde.com

- All sizes and styles are available for sour gas service.
- The X represents the schedule of pipe: 5 = XXHvy, 4 = Schedule 160.
- 6" fittings are available in Butt Weld only and for XX-Heavy pipe.
- † Welded connection shown is BUTTWELD type. IMPORTANT: When ordering BUTTWELD fittings, please specify size and schedule of pipe.
- The part number for the higher pressure ratings start with the number 413 in place of 313.

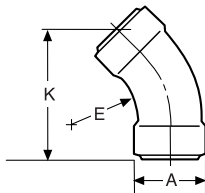
MANIFOLD FITTINGS

Long Sweep
ELL-90°



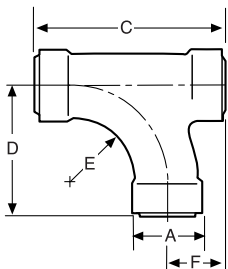
SIZE In.	DIMENSIONS In.			THREADED CONNECTION	WELDED CONNECTION†
	E	A	D	PART NO.	PART NO.
2	4 ^{13/16}	3 ^{1/4}	8	313-110-2200	313-410-2200-XX
3	5 ^{1/4}	5 ^{3/4}	14	313-110-3300	313-410-3300-XX
4	5 ^{1/4}	5 ^{3/4}	14	313-110-4400	313-410-4400-XX
5	5 ^{3/8}	7 ^{3/4}	16	313-110-5500	313-410-5500-XX
6	5 ^{3/8}	7 ^{3/4}	16		313-410-6600-XX

Long Sweep
ELL-45°



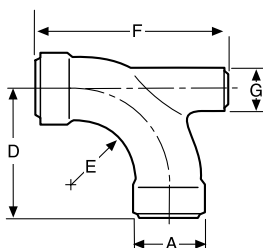
SIZE In.	E	A	K	PART NO.	PART NO.
	2	4 ^{13/16}	3 ^{1/4}	7 ^{5/16}	313-111-2200
3	5 ^{1/4}	5 ^{3/4}	10 ^{7/8}	313-111-3300	313-411-3300-XX
4	5 ^{1/4}	5 ^{3/4}	10 ^{7/8}	313-111-4400	313-411-4400-XX
5	5 ^{3/8}	7 ^{3/4}	11 ^{1/2}	313-111-5500	313-411-5500-XX
6	5 ^{3/8}	7 ^{3/4}	11 ^{1/2}		313-411-6600-XX

Long Sweep
Tee



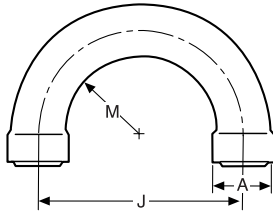
SIZE In.	E	A	C	D	PART NO.	PART NO.
	2	4 ^{3/16}	3 ^{1/4}	11	8	313-144-2222
3	5 ^{1/4}	5 ^{3/4}	16	11	313-120-3330	313-420-3330-XXX
4	5 ^{1/4}	5 ^{3/4}	16	11	313-120-4440	313-420-4440-XXX
4x3x4	5 ^{1/4}	5 ^{3/4}	16	11	313-120-4340	313-420-4340-XXX
4x4x3	5 ^{1/4}	5 ^{3/4}	16	11	313-120-4430	313-420-4430-XXX
5	5 ^{3/8}	7 ^{3/4}	19	12	313-120-5550	313-420-5550-XXX
5x4x5	5 ^{3/8}	7 ^{3/4}	19	12	313-120-5450	313-420-5450-XXX
6	5 ^{3/8}	7 ^{3/4}	19	12		313-420-6660-XXX

Long Sweep ELL
w/2" Top Outlet



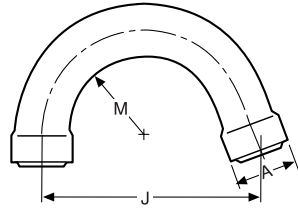
SIZE In.	E	A	G	F	D	PART NO.	PART NO.
	3	5 ^{3/4}	5 ^{3/4}	3 ^{1/4}	16	11	313-120-3330
4	5 ^{3/4}	5 ^{3/4}	3 ^{1/4}	16	11	313-120-4440	313-420-4440-XXX
3x4	5 ^{3/4}	5 ^{3/4}	3 ^{1/4}	16	11	313-120-4340	313-420-4340-XXX
4x3	5 ^{3/4}	5 ^{3/4}	3 ^{1/4}	16	11	313-120-4430	313-420-4430-XXX
5	5 ^{3/8}	7 ^{3/4}	3 ^{3/4}	18	12	313-120-5550	313-420-5550-XXX
6	5 ^{3/8}	7 ^{3/4}	3 ^{3/4}	18	12		313-420-6660-XXX

**Standpipe
Gooseneck-
180°**



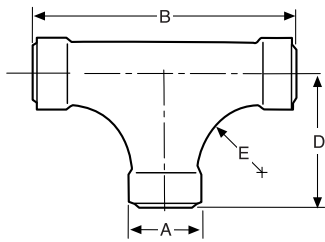
MANIFOLD FITTINGS				
SIZE In.	DIMENSIONS In.			THREADED CONNECTION
	M	A	J	Part No.
4	4 ¹ / ₄	5 ³ / ₄	14	313-133-4400

**Standpipe
Gooseneck-
160°**



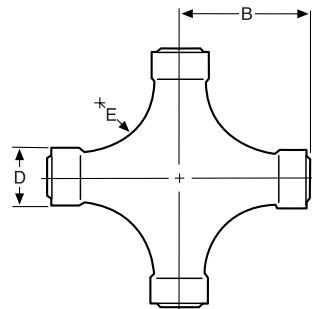
SIZE In.	DIMENSIONS In.			THREADED CONNECTION	WELDED CONNECTION†
	R	A	B	PART NO.	PART NO.
2	4 ⁹ / ₁₆	3 ³ / ₄	12 ¹⁵ / ₁₆	313-132-2200	313-432-2200-XX
3	4 ⁹ / ₁₆	5 ³ / ₄	14	313-132-3300	313-432-3300-XX
4	3 ²³ / ₃₂	5 ³ / ₄	14	313-132-4400	313-432-4400-XX
4x3	3 ⁷ / ₈	5 ³ / ₄	16	313-132-4300	313-432-4300-XX
5	3 ⁷ / ₈	7 ³ / ₄	16	313-132-5500	313-432-5500-XX
6	3 ⁷ / ₈	7 ³ / ₄	16	313-132-6600	313-432-6600-XX

**Long Sweep
Full Flow Tee**



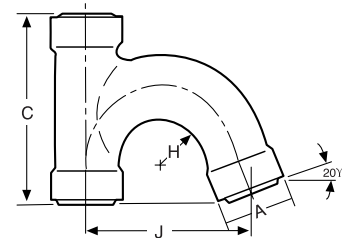
	E	A	B	D	PART NO.	PART NO.
2	4 ³ / ₁₆	3 ¹ / ₄	16	8	313-124-2220	313-424-2220-XXX
3	5 ¹ / ₄	5 ³ / ₄	22	11	313-124-3330	313-424-3330-XXX
4	5 ¹ / ₄	5 ³ / ₄	22	11	313-124-4440	313-424-4440-XXX
4x3x4	5 ¹ / ₄	5 ³ / ₄	22	11	313-124-4340	313-424-4340-XXX
4x4x3	5 ¹ / ₄	5 ³ / ₄	22	11	313-124-4430	313-424-4430-XXX
5	5 ³ / ₈	7 ³ / ₄	24	12	313-124-5550	313-424-5550-XXX
6	5 ³ / ₈	7 ³ / ₄	24	12		313-424-6660-XXX

**Full Flow
Cross**



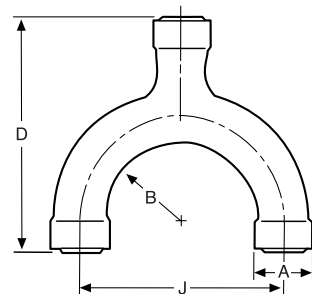
	E	D	2xB	B	PART NO.	PART NO.
2	4 ¹³ / ₁₆	3 ¹ / ₄	16	8	313-144-2222	313-424-2222-XXXX
3	5 ¹ / ₄	5 ³ / ₄	22	11	313-144-3333	313-424-3333-XXXX
4	5 ¹ / ₄	5 ³ / ₄	22	11	313-144-4444	313-424-4444-XXXX
5	5 ³ / ₈	7 ³ / ₄	24	12	313-144-4444	313-424-5555-XXXX
6	5 ³ / ₈	7 ³ / ₄	24	12		313-424-6666-XXXX

**Standpipe
Gooseneck-
160°
w/Top Outlet**



	H	A	J	C	PART NO.	PART NO.
3	3 ²³ / ₃₂	5 ³ / ₄	14	16	313-132-3330	313-432-3330-XXX
4	3 ²³ / ₃₂	5 ³ / ₄	14	16	313-132-4440	313-432-4440-XXX
5x4x5	3 ⁷ / ₈	5 ³ / ₄	16	19	313-132-5450	313-432-5450-XXX
5	3 ⁷ / ₈	7 ³ / ₄	16	19	313-132-5550	313-432-5550-XXX
6	3 ⁷ / ₈	7 ³ / ₄	16	19		313-432-6660-XXX

**Long
Sweep Y**



	B	A	D	J	PART NO.	PART NO.
3	4 ¹ / ₄	5 ³ / ₄	19 ¹ / ₂	14	313-150-3330	313-450-3330-XXX
4	4 ¹ / ₄	5 ³ / ₄	19 ¹ / ₂	14	313-150-4440	313-450-4440-XXX
5	4 ¹ / ₄	7 ³ / ₄	19 ¹ / ₂	14		313-450-5550-XXX



A DIVISION OF BOB HERBERT & ASSOCIATES, INC.
www.bhde.com