

MUD TANK UNIONS

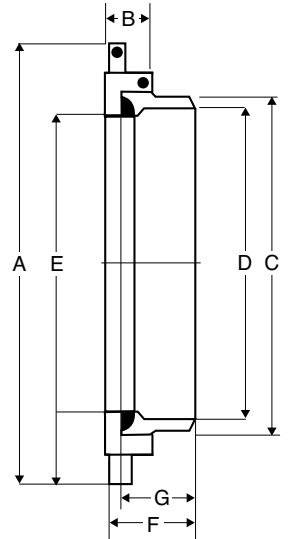


HAMMERSEAL™ UNIONS

Distributed By



A DIVISION OF BOB HERBERT & ASSOCIATES, INC.
www.bhde.com



Hammerseal™ Unions are designed to join drilling mud tanks quickly and without leaks. The external threaded male portion of the UNION welds to a pipe stub at the tank wall. A smaller O.D. connecting pipe extends through the female portion, the O-ring, and then the male portion of the union.

When the internally threaded female component is tightened onto the male component, the O-ring between the components is squeezed to an oblong cross-section. The O-ring then seals against the O.D. of the connecting pipe. Hammerseal™ unions are offered in sizes 3" through 20".

KEMPER HAMMERSEAL™ UNION DIMENSIONS

CONNECTS NOMINAL SIZE OILFIELD PIPE	FEMALE COMPONENT WELDS TO	ASSEMBLY PART NO.	APPROX. WT. LBS.	O-RING PART NO.	APPROX. WT. LBS.	A	B	C	D	E	F	G
3-Inch (3 1/2" OD)	4-Inch	300A	15	300OR	0.38	9.75	2.00	4.50	3.94	3.75	3.50	3.00
4-Inch (4 1/2" OD)	6-Inch	400A	22	400OR	0.50	10.75	2.00	6.63	5.88	4.81	3.50	3.00
6-Inch (6 5/8" OD)	8-Inch	600A	37	600OR	0.75	13.50	2.00	8.63	7.88	6.88	5.00	4.50
8-Inch (8 5/8" OD)	10-Inch	800A	42	800OR	1.00	15.75	2.00	10.75	10.00	8.88	5.00	4.50
10-Inch (10 3/4" OD)	12-Inch	1000A	53	1000OR	1.25	17.75	2.00	12.75	12.00	11.00	5.00	4.50
12-Inch (12 3/4" OD)	14-Inch	1200A	61	1200OR	1.50	19.75	2.00	14.00	13.25	13.00	5.00	4.50
13-Inch (13 3/8" OD)	13-Inch (Casing)	1300A	53	1300OR	1.60	19.75	2.00	14.13	13.50	13.50	5.00	4.50
14-Inch (14" OD)	16-Inch	1400A	83	1400OR	1.75	22.00	2.00	16.00	15.00	14.25	4.50	4.00
16-Inch (16" OD)	18-Inch	1600A	99	1600OR	2.00	24.00	2.25	18.00	16.50	16.25	4.56	4.00
18-Inch (18" OD)	20-Inch	1800A	110	1800OR	2.25	26.00	2.25	20.00	18.80	18.25	4.56	4.00
20-Inch (20" OD)	22-Inch	2000A	140	2000OR	3.00	28.00	2.25	22.00	20.80	20.25	5.00	5.63